

Fitnessgram 9 Implementation: State

Data

When preparing to populate the database, the teachers, classes, and students need to be divided into three separate .csv files and an import app supplied by Human Kinetics will be used to facilitate the import process. The file formats are as indicated here:

To import your teachers, make sure the file contains the following:

School ID Teacher LName Teacher FName Teacher ID Username Password

To import your students, make sure the file contains the following:

School ID Student LName Student FName Address 1 Address2
City State Zip Birthdate Student ID Gender Ethnicity Grade

To import your classes, make sure the file contains the following:

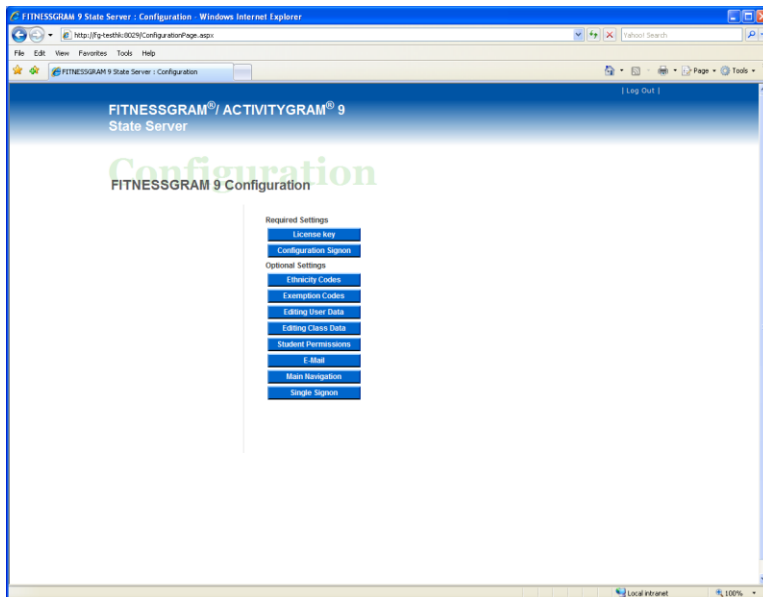
School ID Teacher ID Student ID Class ID Class Title Class Description

The color-coded IDs have to match exactly from one file to the next.

The Teacher.csv file and the Student.csv file put the users in a school in the database. The import of the class.csv file puts the students in the correct classes with the correct teachers. If any of the IDs in these files do not exactly match the IDs in the other files, the data will not be viewable and identifiable.

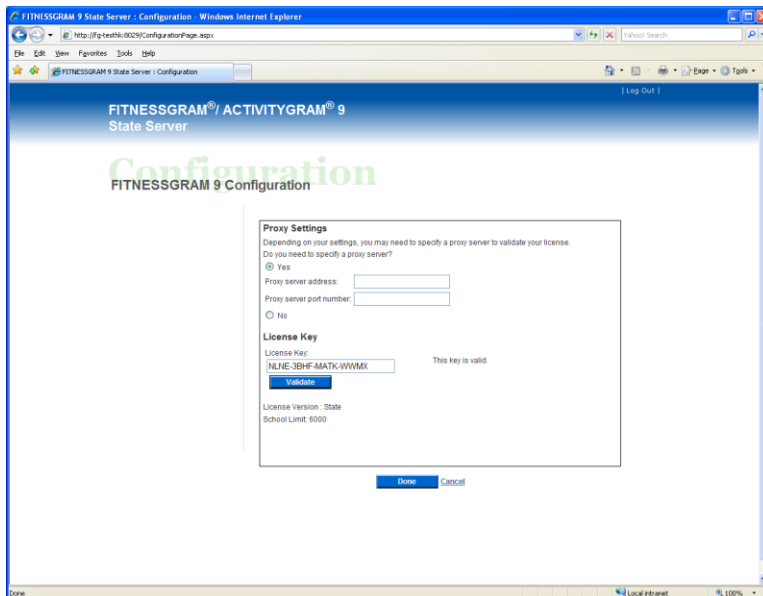
Configuration

Logging into the state server with the default Username: config and Password: config gives access to the required and optional settings. The optional settings can be managed to meet the needs of the state.



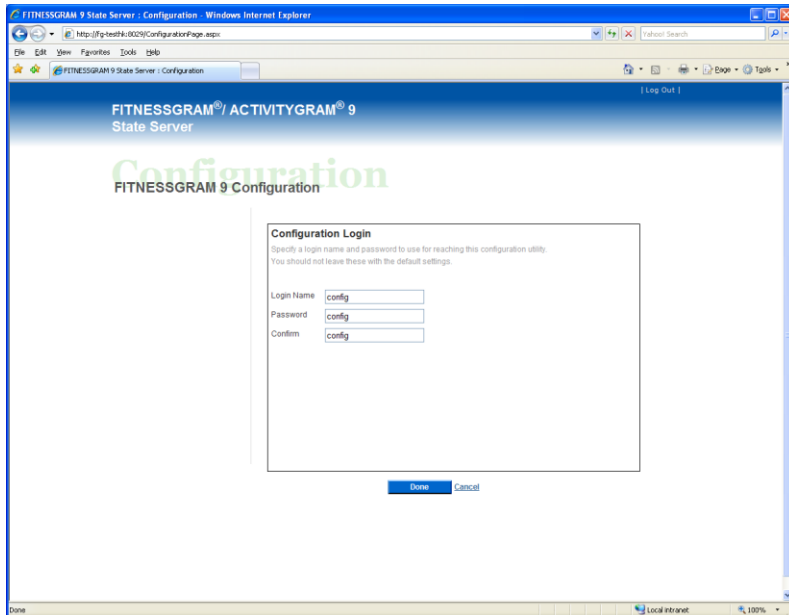
Required Settings

Proxy settings require a proxy server address and port number if a proxy server is being used.

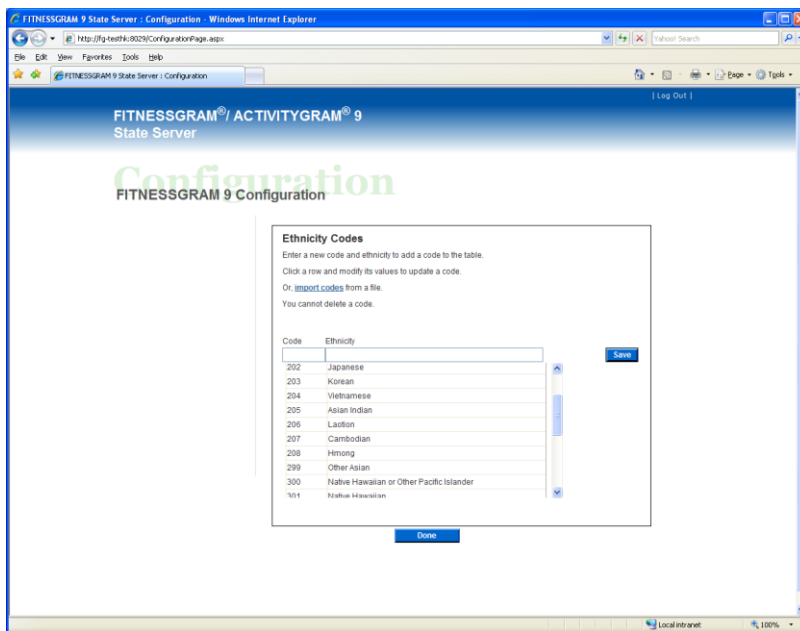


This screen is also where the license key is entered and validated. It also indicates how many school licenses have been authorized for that state.

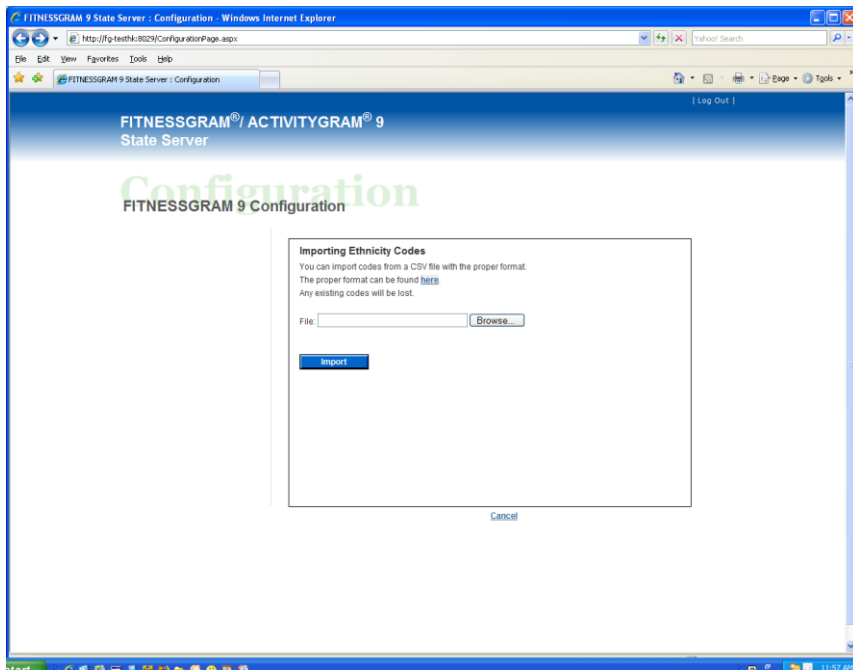
Optional Settings



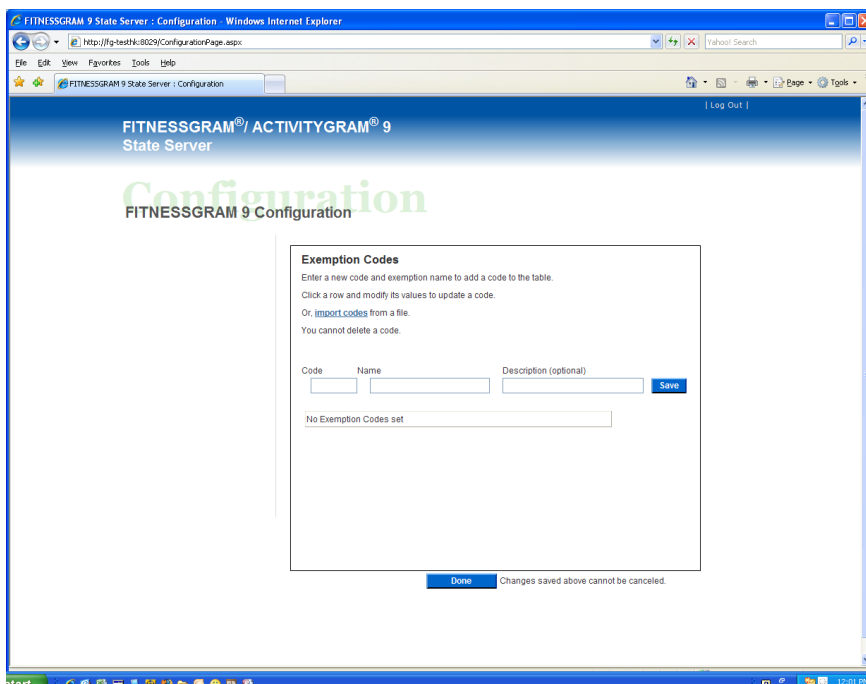
The Configuration Login screen allows a state administrator to specify a login name and password for gaining access to the configuration utility.



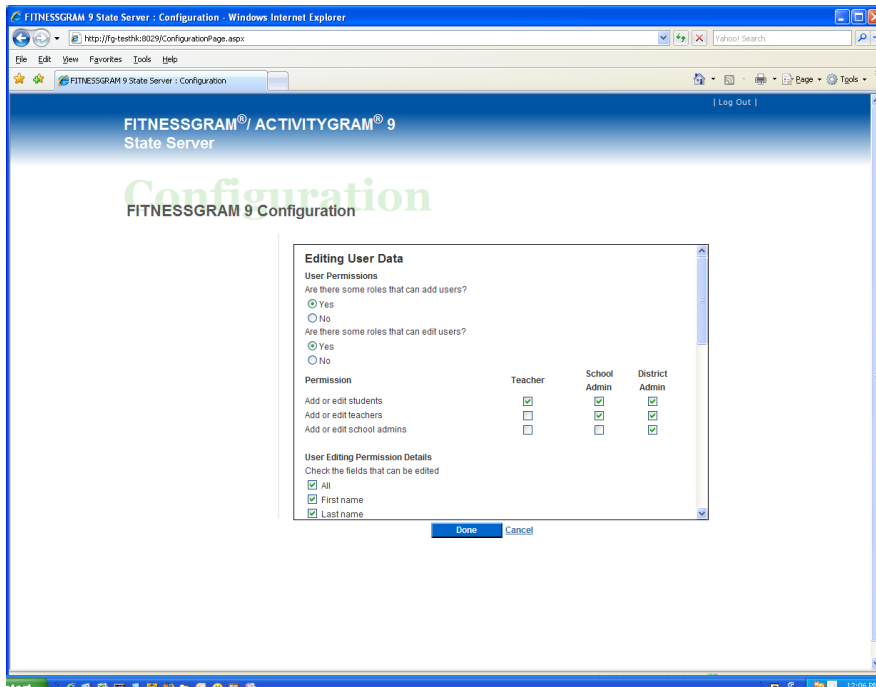
On the Ethnicity Codes screen, a new code and ethnicity can be added to the table, existing codes can be updated, and codes can be imported using a .csv file with the following format:



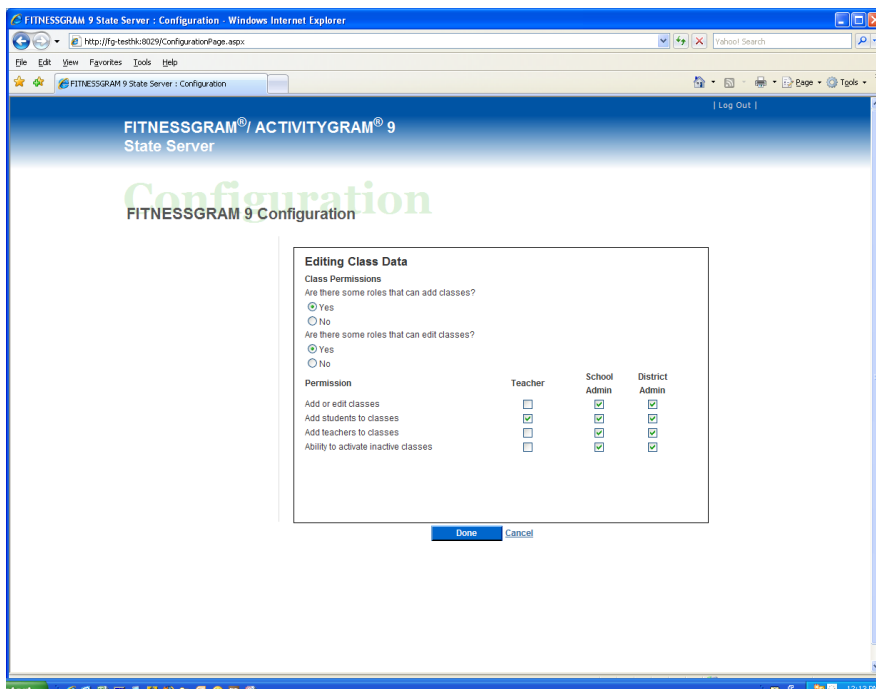
Exemption codes can be used for students who are absent when testing takes place, have an illness or injury that makes it unsafe for them to be tested, or have any physical challenges that make it impossible for them to be tested properly according to Fitnessgram standards.



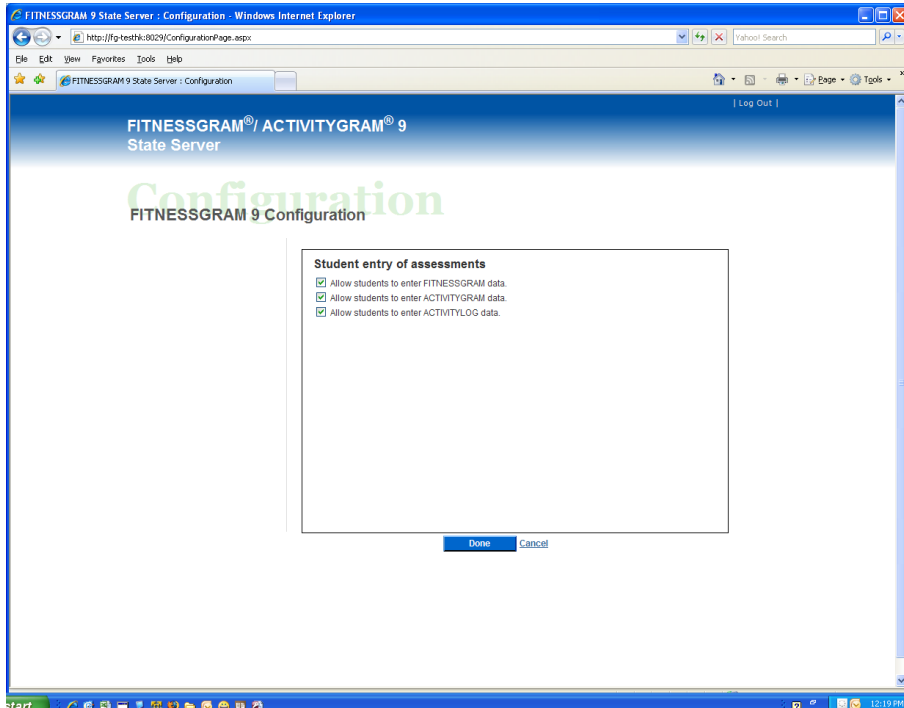
Exemption codes can be entered manually or imported using a .csv file in this format:



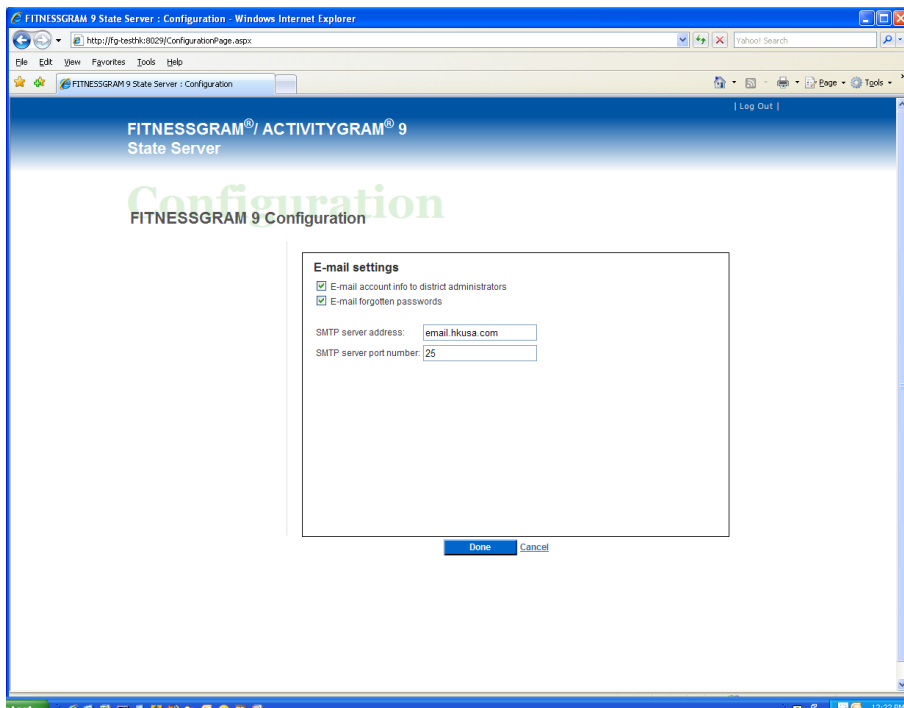
On the Editing User Data screen, it can indicate which fields have to be populated and what each level of user can edit.



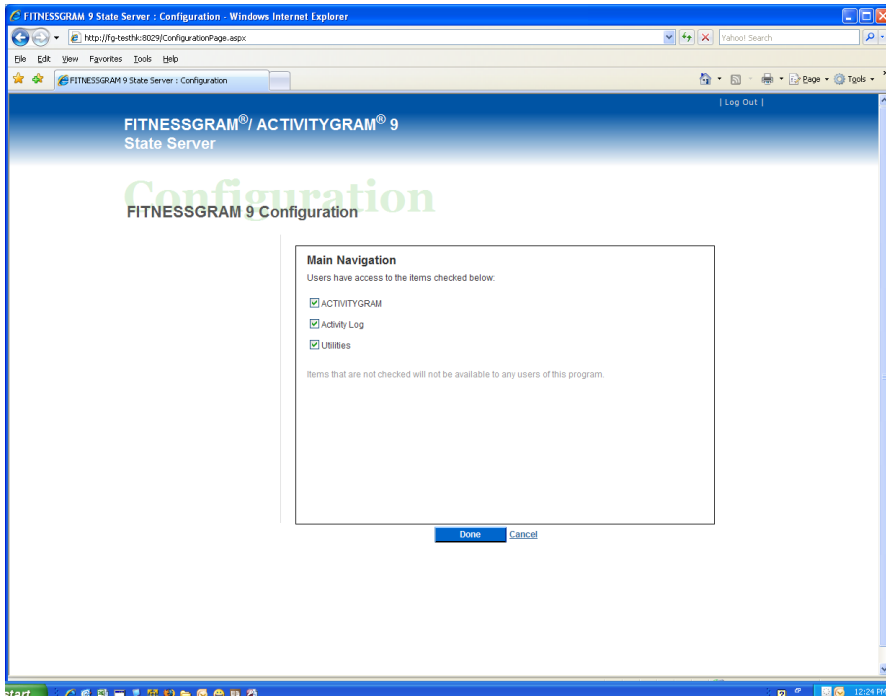
On the Editing Class Data screen, each level of user can be given permission to add or edit classes, add students to classes, add teachers to classes, and activate inactive classes.



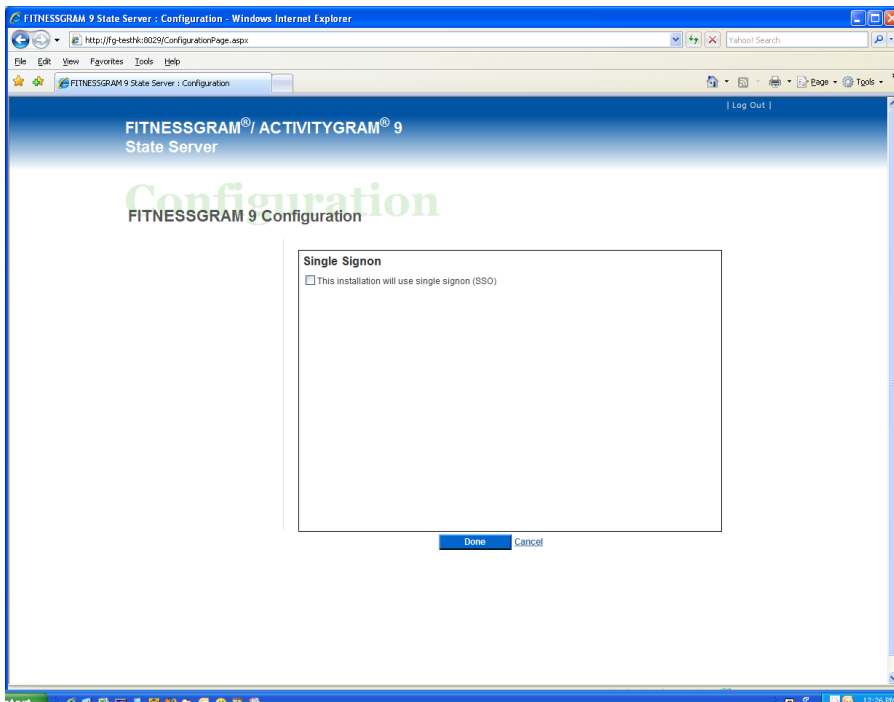
If students will have access to any part of the program, then the permission for this can be granted on this page.



E-mail settings can be managed on this page.



Main Navigation allows access to Activitygram, Activity Log, and Utilities to be controlled by the state administrator.



If SSO is being used statewide, that has to be indicated on this screen.

If you have questions or need assistance, please contact Human Kinetics Technical Support.

[Technical Support](#)

Monday through Friday, 7 a.m. to 7 p.m. CST except holidays

Phone: 217.351.5076 option 3 for Technical Support

E-mail: support@hkusa.com