

Fitnessgram 9 Configuration

This document explains the options within the Configuration Info area of the Utilities Menu.

To get to this menu, you will need to sign in to Fitnessgram 9 with the default District Admin account login.

User name: dadmin1

Password: dadmin1

Click Log In Now.

IN PARTNERSHIP WITH
Play60
THE NFL MOVEMENT FOR AN ACTIVE GENERATION

FG FITNESSGRAM
Including **AG ACTIVITYGRAM**

State: Iowa
District: Johnston Comm School
School: Beaver Creek Elementary
User Name: dadmin1
Password: dadmin1
 Remember me

Type in your Password →

[Forget Password](#)

Log In Now

Presented by
The Cooper Institute

Published by
HUMAN KINETICS

© 2010 Human Kinetics, Inc.

To access the advanced admin features, click on the Utilities button on the left navigation bar.

Logged into Beaver Creek Elementary as a District Admin

Welcome to FITNESSGRAM / ACTIVITYGRAM 9 State Model program!

How to Navigate:
Use the navigational buttons on the left-hand side of the screen to access various parts of this program. Use your browser's Back button to access a previous screen.

1. Use the Help link in the upper right-hand corner for online Help instructions.
2. My Info: Use this link to edit your log in and other information.
3. Left-hand side:
 - a. **New! My Classes** – Consider this area to be your 'hub' or focal point to access students, FITNESSGRAM tests, and ACTIVITYGRAM assessments in one easy location.
 - b. **New! Users** – Depending on your permissions/security level in the program, you search for users (students or teachers) here.

If you have any questions, please read through the Help files or contact a Human Kinetics Technical Support team member at support@hkusa.com or 1-800-747-4457 (select option 3).

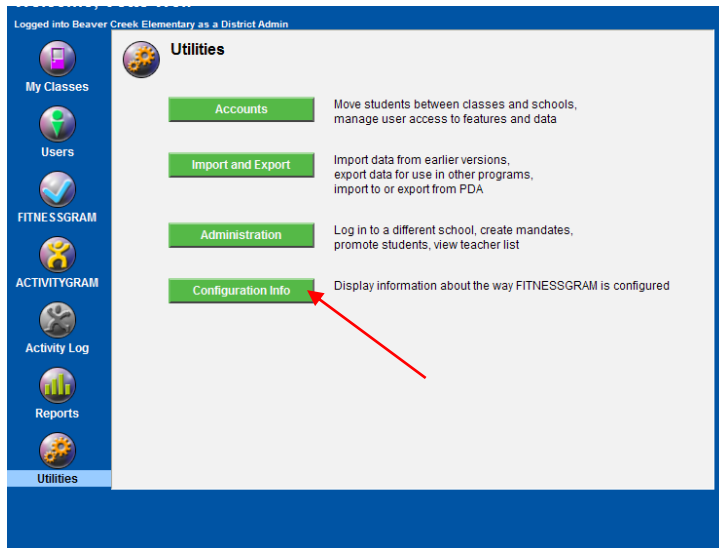
Contact your school or district IT staff if you can access other web sites but not the FITNESSGRAM9 program.

Messages Area:

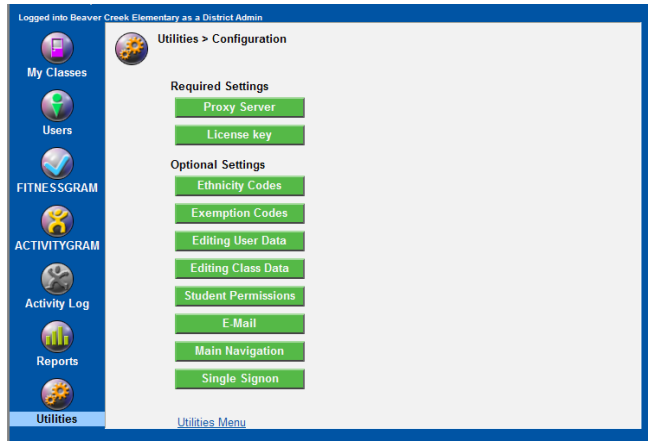
My Classes
Users
FITNESSGRAM
ACTIVITYGRAM
Activity Log
Reports
Utilities

Configuration

This will display all the Utilities menu options. Click on Configuration Info to enter the Administration menu.



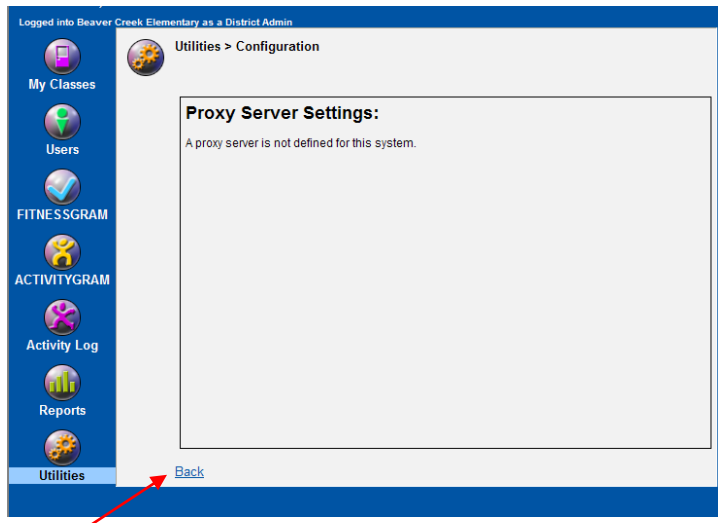
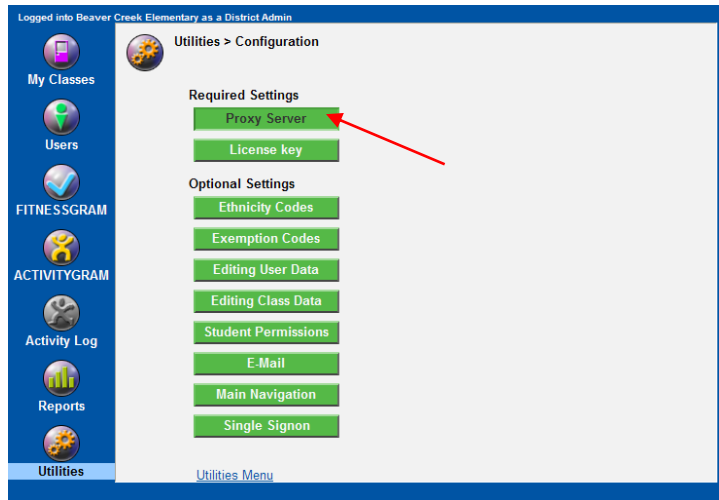
This will display the Configuration Info menu. The menu options in this area are not available to edit within the program. These options will show you what has been set for this version by the administrator. If changes need to be made, you will need to contact your Fitnessgram Administrator for assistance.



Required Settings

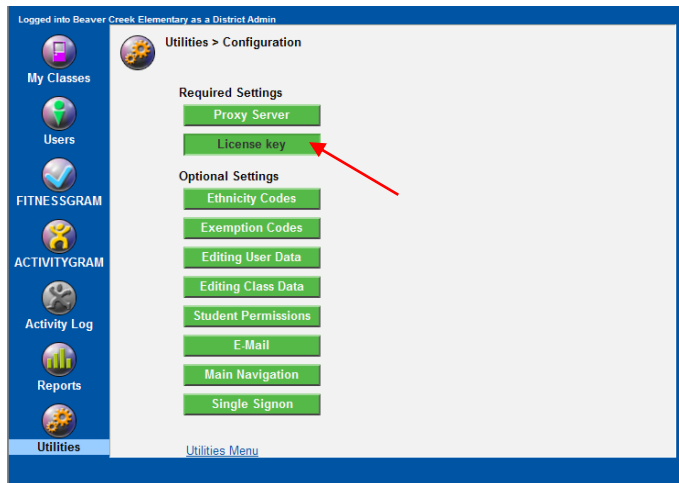
Proxy Settings

If a proxy server has been identified for your Fitnessgram server to gain access through it will be reflected here.

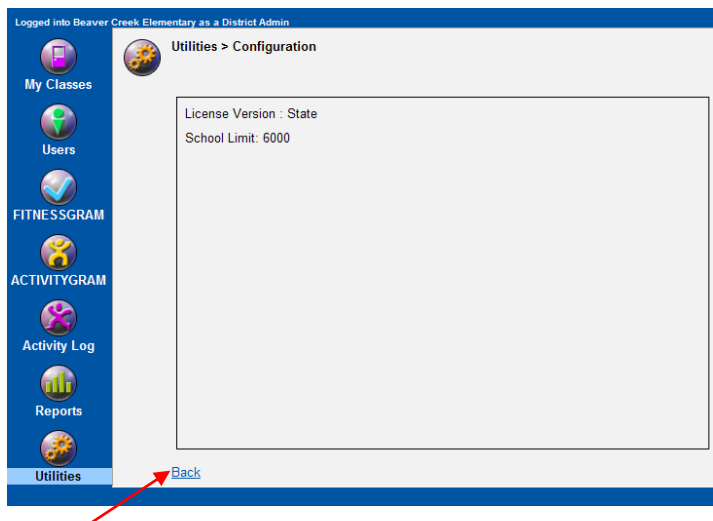


After viewing the information, click the Back link to return to the Configuration menu.

License Key This menu option will show you the licensing information for your installation. Click on the License Key button to see this information.



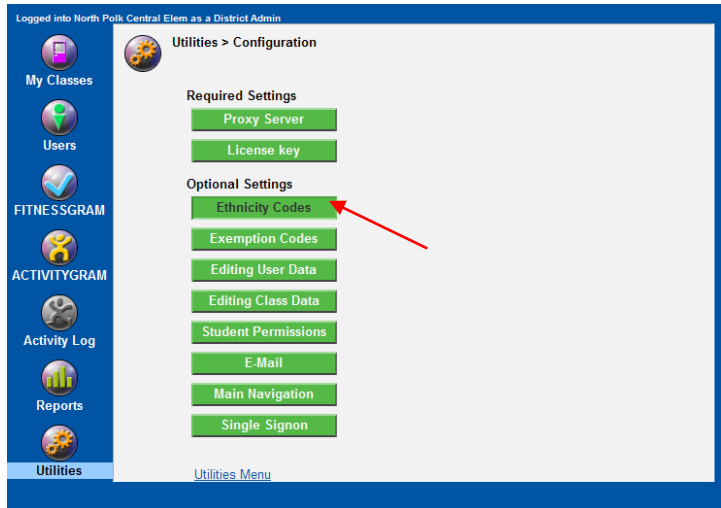
You will be able to view the number of schools you are licensed for and your version of Fitnessgram 9.



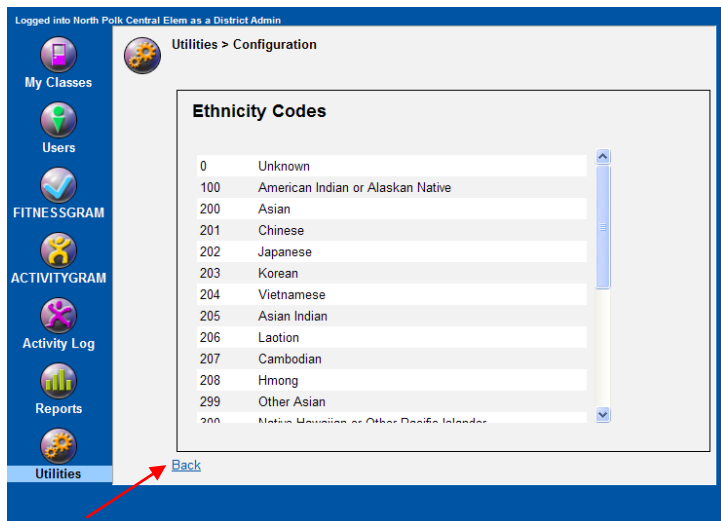
After viewing the information, click the Back link to return to the Configuration Menu.

Optional Settings

Ethnicity Codes This menu shows you the ethnicity codes used by the Fitnessgram 9 program. Click on the Ethnicity Codes button to view the codes.

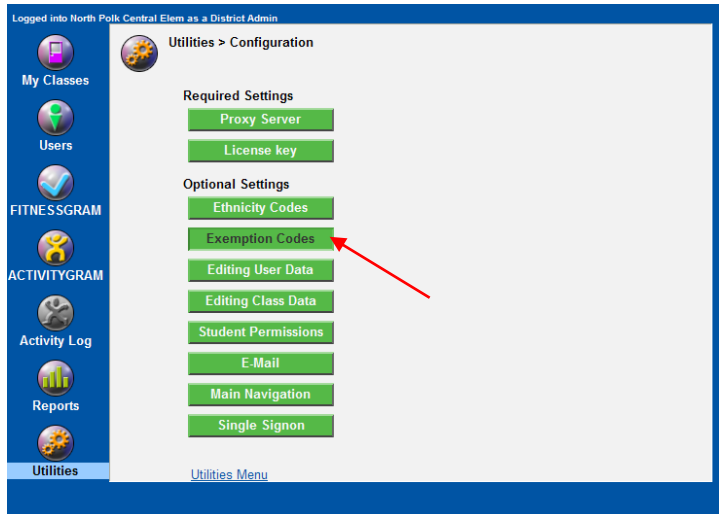


The default federal ethnicity codes will be listed unless the system administrator has imported codes specific to your state, district, or school.

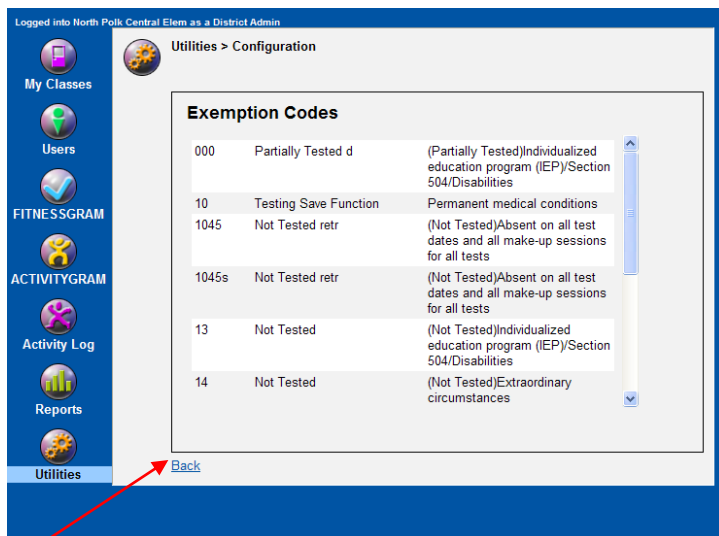


After viewing the information, click the Back link to return to the Configuration Menu.

Exemption Codes This menu allows you to view the exemption codes for students unable to complete testing for different circumstances. Click on the Exemption Codes button to view the description and codes set for the exemptions.

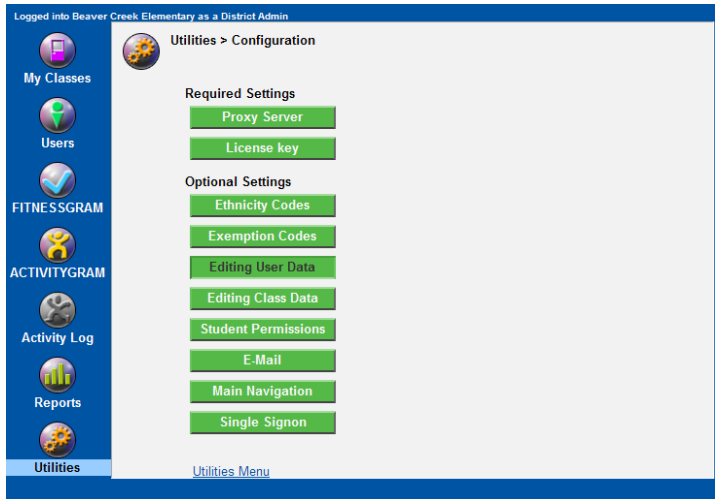


These exceptions and codes are determined by administration in your state, district, or school.

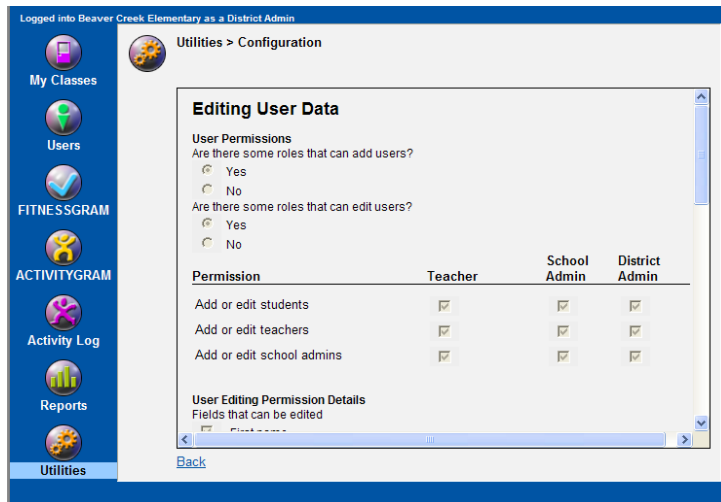


After viewing the information, click the Back link to return to the Configuration menu.

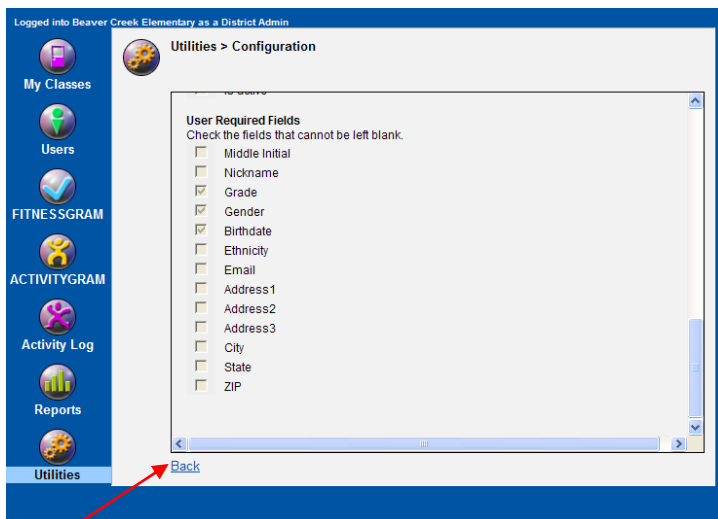
Editing User Data This menu is used to identify what roles can add or edit users and what the permissions are for each role, and it shows what the required fields are for the program.



If a role has permission to add or edit students, teachers, or school admin users, the box will be checked to allow these functions. If a role is not allowed to add or edit, then the permission box is left unchecked. These permissions are at your district or school's discretion.

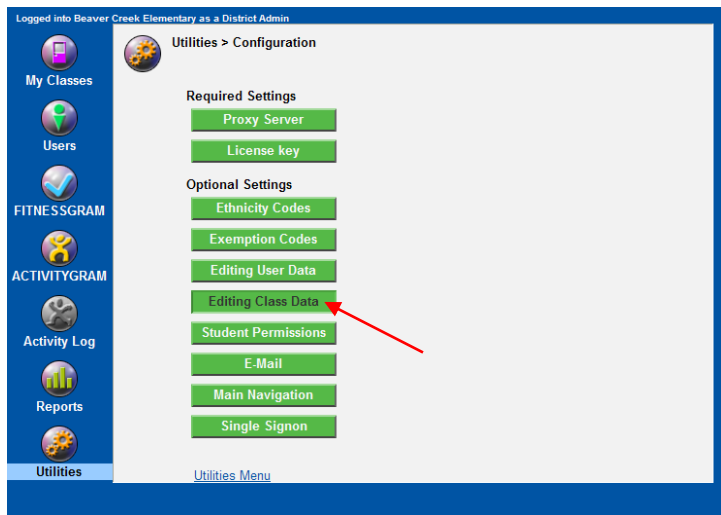


The same is true for required fields. If a field is checked, then you need to enter data for that field.

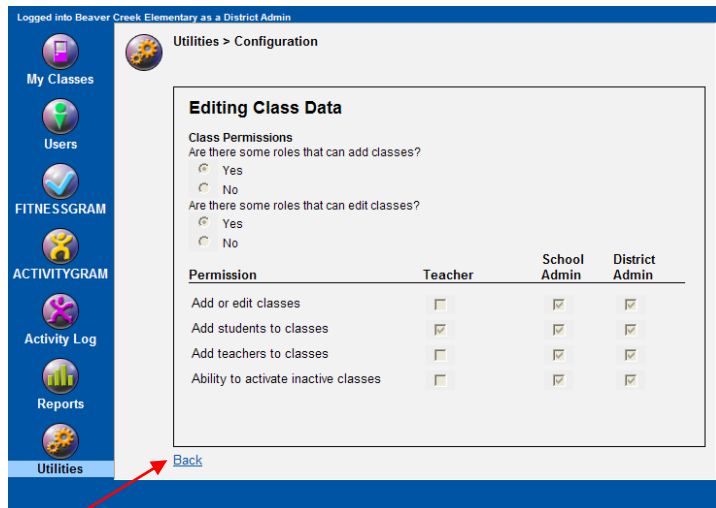


After viewing the information, click the Back link to return to the Configuration menu.

Editing Class Data This menu is used to identify which roles can add or edit classes and which permissions are set for those roles. Click on the Editing Class Data button to view the permissions.

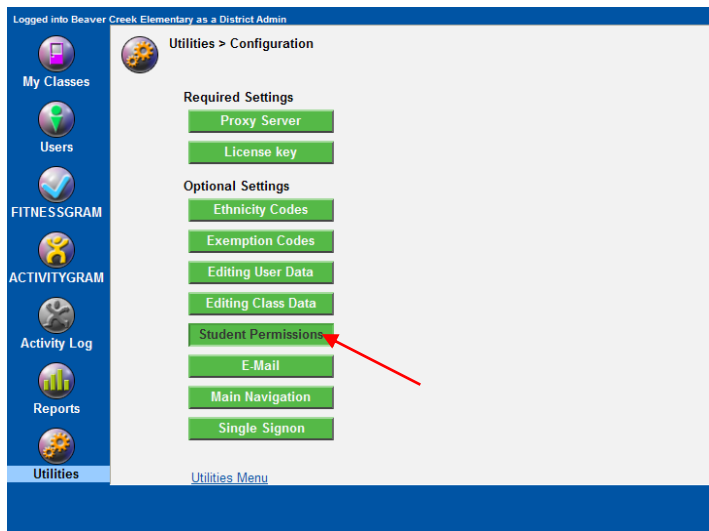


The roles that have permission to add or edit classes within the application will be checked. If a role is not allowed to add or edit, then that box is left unchecked, as shown below. These permissions are at your district or school's discretion.

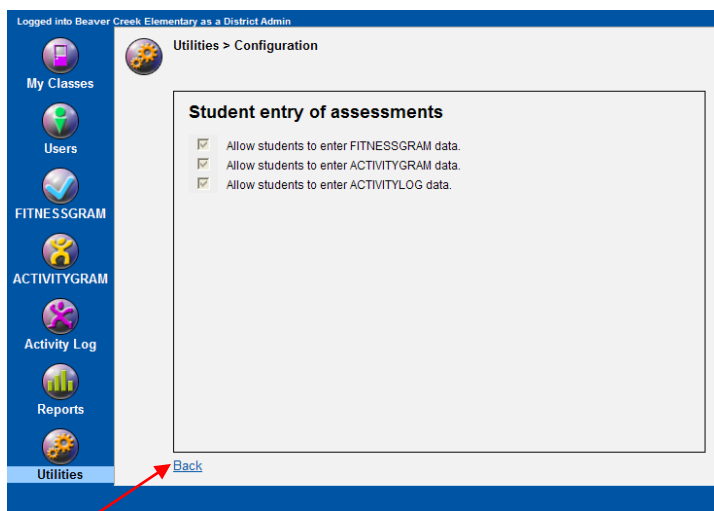


After viewing the information, click the Back link to return to the Configuration menu.

Student Permissions This menu shows you what permissions that students have for entering data into assessments for Fitnessgram tests, Activitygram, or Activity Log. Click on the Student Permissions button to access the information.

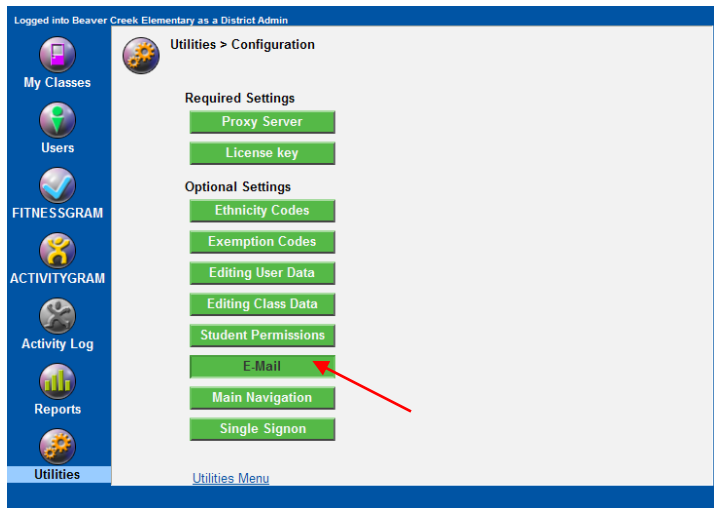


Assessments checked here will indicate that students have access to those areas. If an assessment area is not checked, the students will not have access to those assessments.

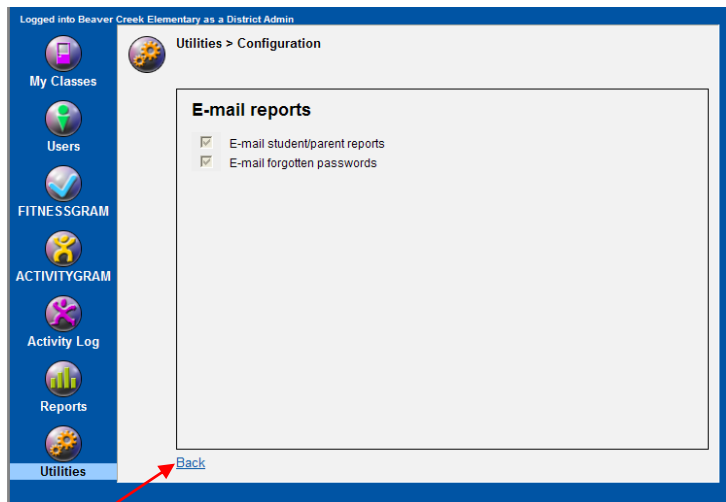


After viewing the information, click the Back link to return to the Configuration menu.

E-Mail This menu will identify e-mail options set for the application. Click on the E-Mail button to access the information.

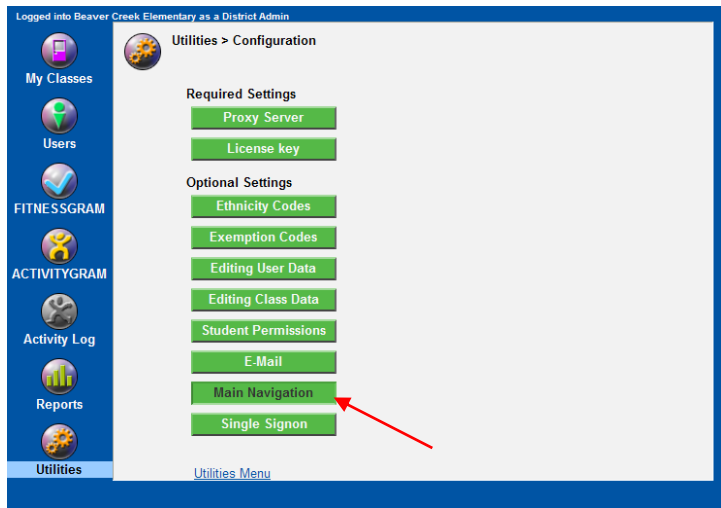


If checked, the student/parent reports will be e-mailed so that paper resources can be conserved. Also, if checked, a forgotten passwords option will be available to users if they need login assistance.



After viewing the information, click the Back link to return to the Configuration menu.

Main Navigation Activitygram, Activity Log, and Utilities are optional areas in Fitnessgram 9. This menu identifies which of those, if not all, are available to your users. Click on the Main Navigation button to access the information.

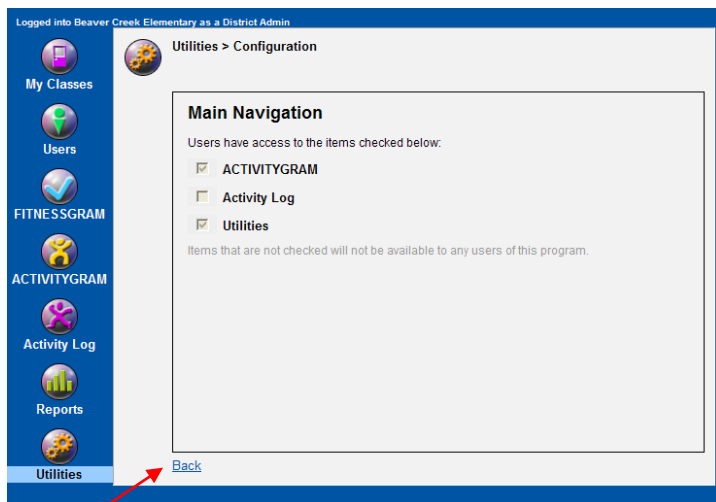


The checked boxes next to the areas in the application indicate that those areas are available to users. If unchecked, those areas will not be available to any users of the program.

Activitygram is the area where assessments for the amount of activity a student performs and the type over a 3-day period are tracked.

Activity Log is where a user would track activity steps or minutes.

The Utilities menu is where an administrator would manage accounts and administration and perform imports or exports within the program.



After viewing the information, click the Back link to return to the Configuration menu.

Technical Support

Monday through Friday, 7 am to 7 pm CST, except holidays

Phone: 217.351.5076, option 3 for Technical Support

E-mail: support@hkusa.com