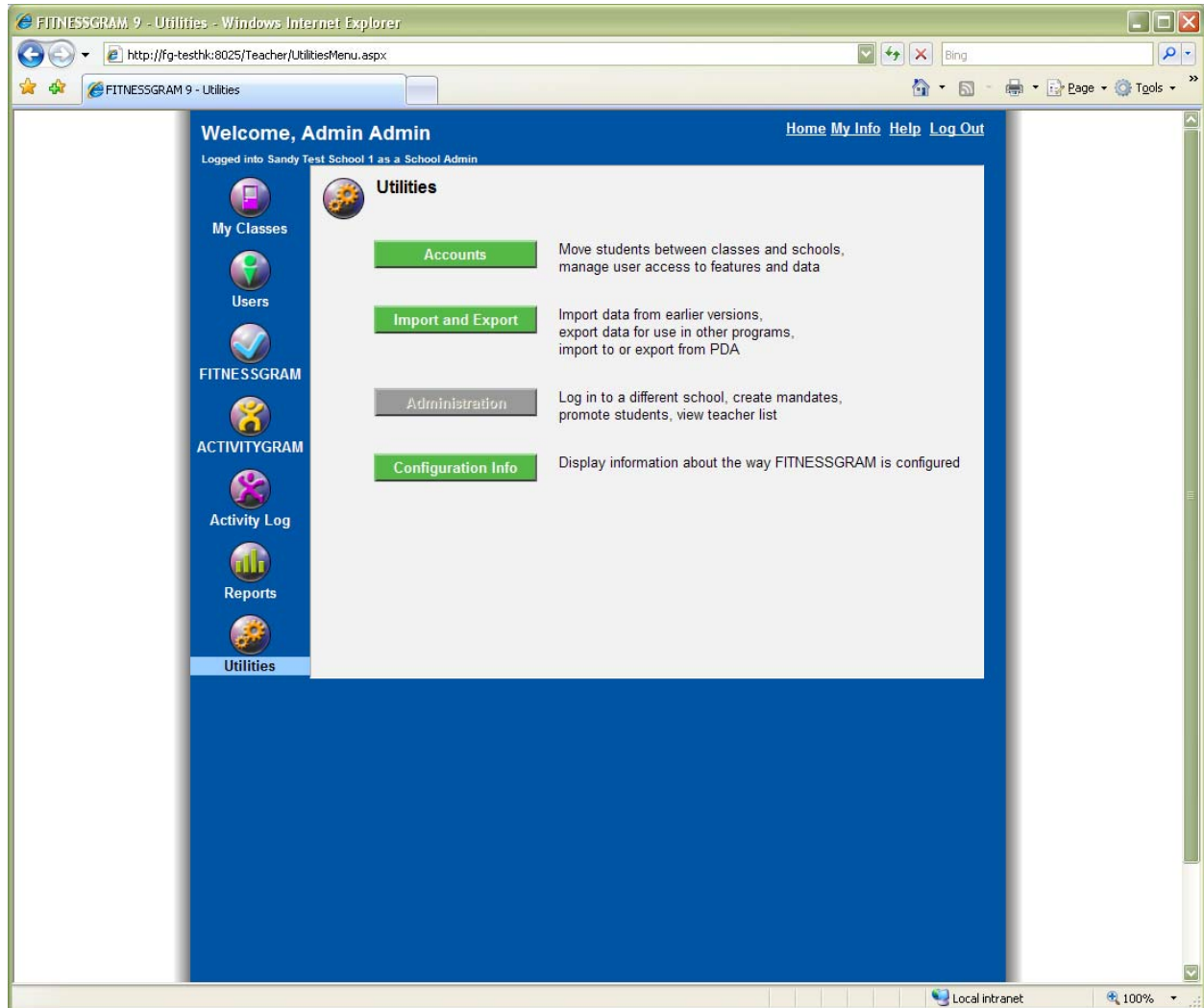
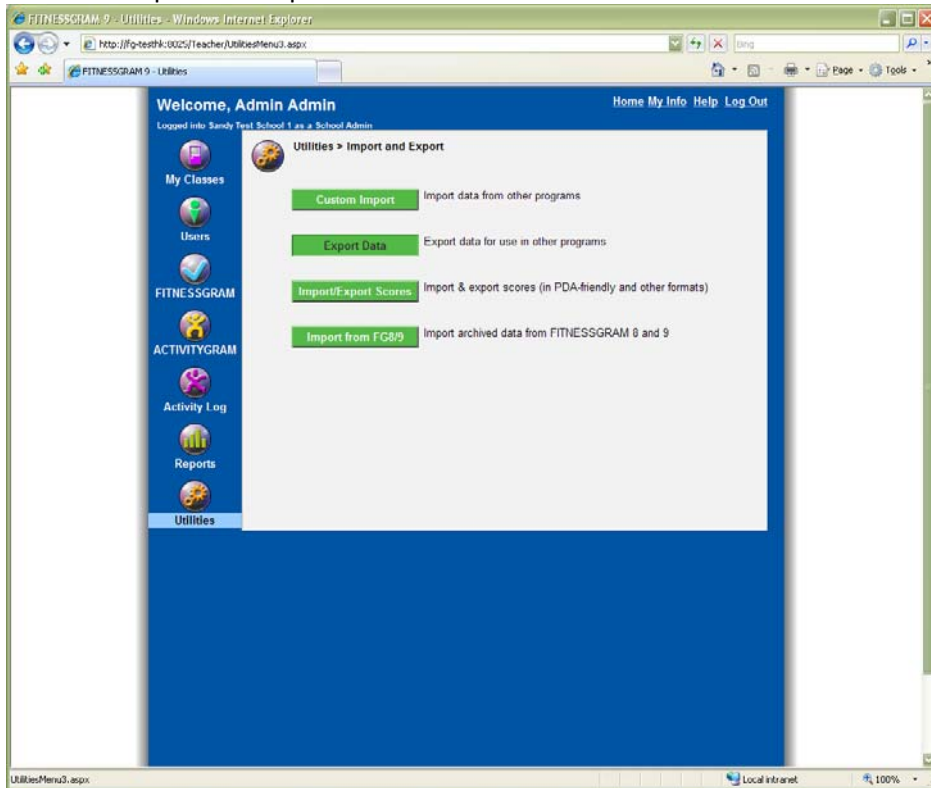


Fitnessgram 9 Research Export

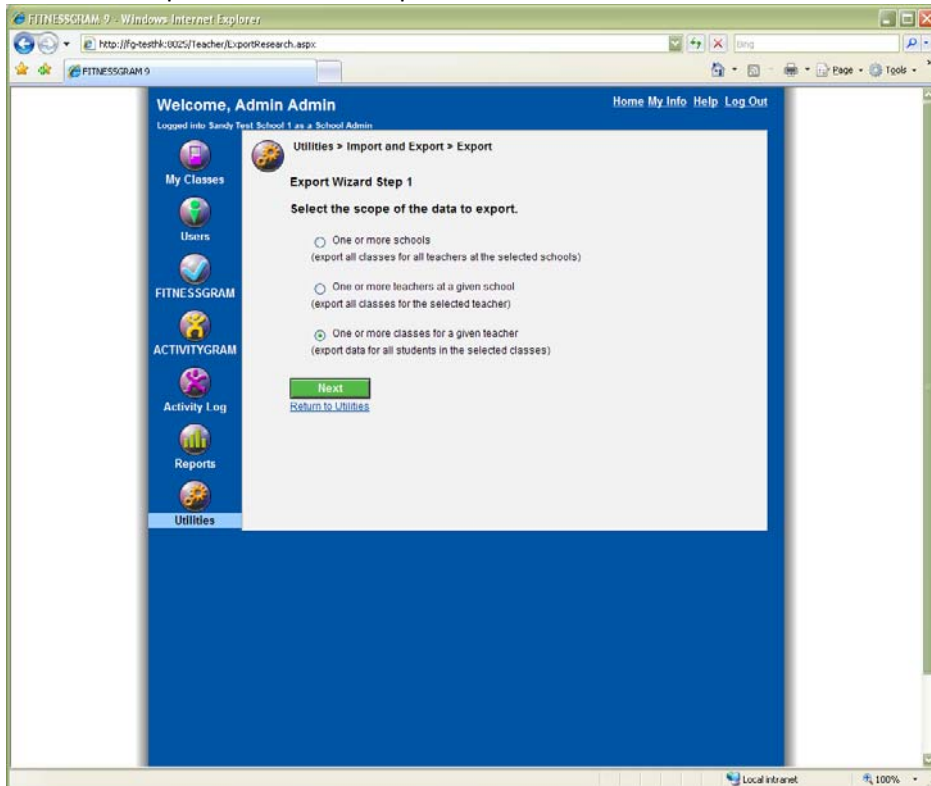
The Fitnessgram 9.0 program provides a research export option (located in Utilities) that will enable you to export FG 9 data into a .csv file with identifying student information removed.



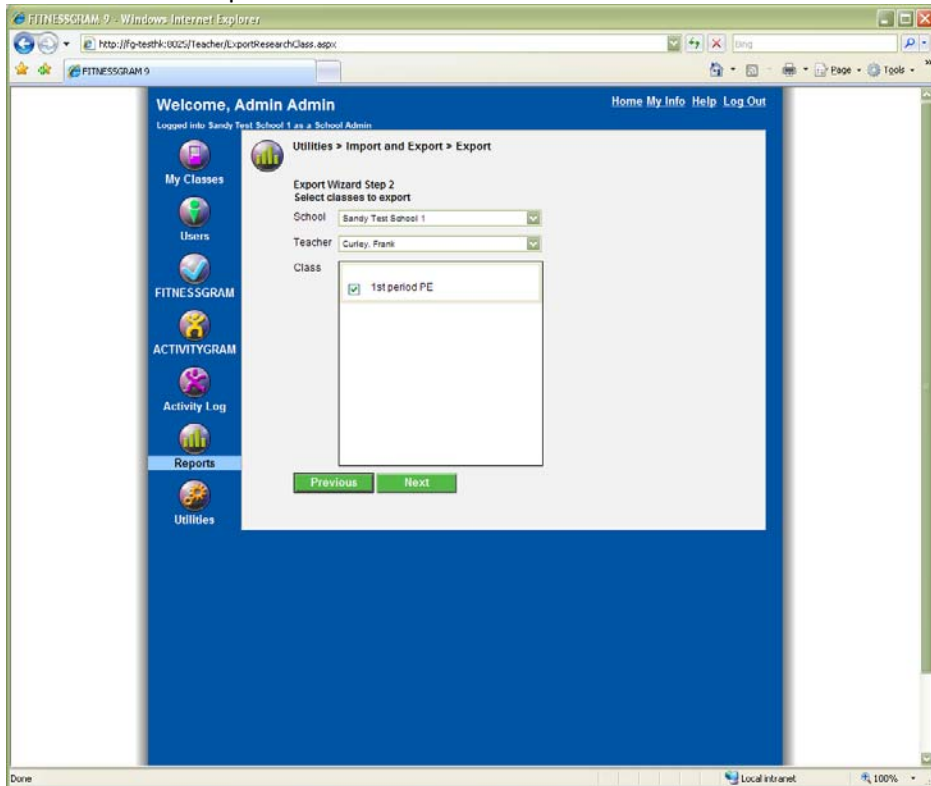
Select the Export Data option.



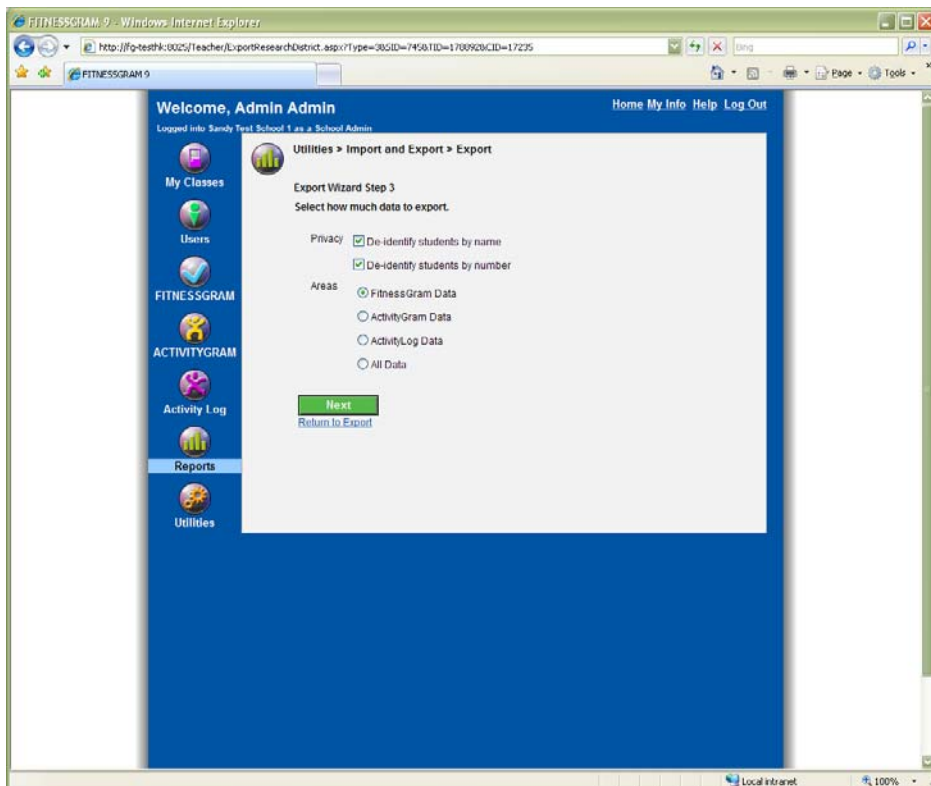
Select the scope of the data to export.



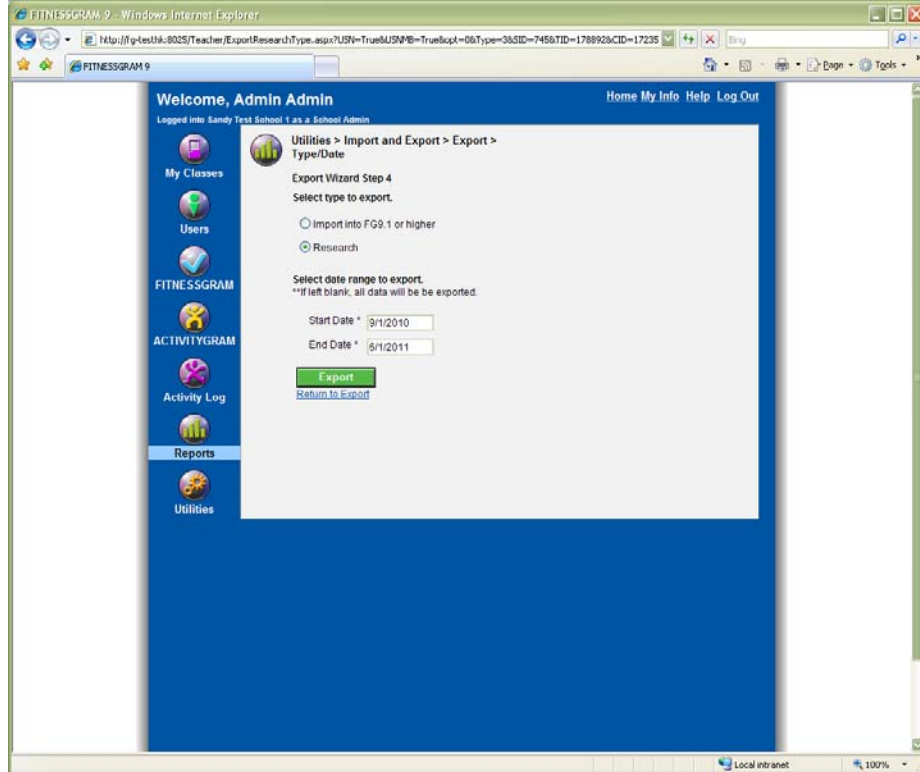
Select classes to export.



Select how much data to export. For privacy reasons, select to De-identify students by name and/or number.



Select the Research export and select your date range. If the date fields are left blank, all data will be exported.



When you select Export the file open/save window will appear and you can select a place to save the FG9(School/Teacher/Class)Research Export.zip file. When you open the zip file, it will contain the .csv file with the exported students and their test data.

The .csv file will contain the following data fields:

StateID
DistrictID
DistrictName
SchoolID
SchoolName
TeacherID
TeacherTraining
ClassID
StudentID
StudentFirstName
StudentMiddleName
StudentLastName
Gender
Ethnicity
TestDate
Age
Grade
HeightFT

HeightIN
Weight
BMI
TricepsSkinfold
CalfSkinfold
AbdominalSkinfold
PercentBodyFat
PACER15laps
PACER20laps
OneMileRunMin
OneMileRunSec
WalkTestMinutes
WalkTestSeconds
WalkTestHeartRate
AerobicCapacity
Curlup
TrunkLift
Pushup
ModifiedPullup
FlexedArmHang
SitandReachR
SitandReachL
ShoulderStretchR
ShoulderStretchL
AerobicDays
StrengthDays
Flexibility
BMIHFZ
PercentFatHFZ
SitandReachHFZ
ShoulderStretchHFZ
CurlupHFZ
PushupHFZ
ModifiedPullupHFZ
FAHFZ
TrunkLiftHFZ
AerobicCapacityHFZ
AbdominalHFZ
TrunkHFZ
UpperBodyHFZ
BodyCompHFZ
flexhfz
NumberofTestsTaken
NumberTestsPassed
testPercent

Some fields are suffixed with HFZ, and in those fields there is a number 1 through 13 used for each student being tested on that event:

- 0 Very Lean
- 1 In HFZ
- 2 Below HFZ
- 3 Some Risk
- 4 High Risk
- 5 Inc. no height/weight
- 6 Inc. too young for walk
- 7 Inc. no heartrate
- 8 Incomplete
- 9 Did not finish
- 10 Internal Error
- 11 Pacer less than 10 laps
- 12 Pacer Greater than 190 laps
- 13 Run greater than 13 mins

These files can be imported into a database or other type of program to perform data analysis. The research export is intended to be used to analyze large volumes of FG9 data from disparate FG9 data sets (e.g., multiple districts and/or multiple states) and to enable you to perform additional calculations not provided for in the FG9 program itself.

The FG9 data is stored in a Microsoft SQL Server relational database. To work with the exported FG9 data outside of the Fitnessgram program, you will need access to a program that enables you to work with large amounts of data.

If you have chosen to export only Fitnessgram/Activitygram data, or only Activity Log data, you will have fewer data records when you run the research export.

Technical Support

Monday through Friday, 7 am to 7 pm CST, except holidays.

Phone: 217.351.5076 option 3 for Technical Support

E-mail: support@hkusa.com